

NORGES HUS



PREFABRICATED HOUSES

A healthy life
in a cozy house

www.norghus.ee

WHO ARE WE?



Norges Hus Tootmise OÜ is a construction company based in Estonia. We specialize in producing and mounting prefabricated houses with wooden structure according to European standards. We build in **Norway, Italy, Germany, Switzerland, Austria and Luxembourg.**



With Norges Hus Tootmise OÜ you can implement the house you've always dreamed of!



All our houses can be well adapted to your personal needs and wishes. Our engineers and developers will accompany and help you through all the process, from idea to implementation.

Our buildings are modern and functional. Among our projects there are also commercial and public buildings, such as shops, offices or clinics.



We constantly strive to create buildings that are functional, modern, and above all - ecological, at a competitive price.



WHY CHOOSE US?

We are convinced that it's possible to build a stable house of high quality, which would correspond to all requirements and regulations, at an affordable price. Every house is designed with care, experience and impeccable quality.



Walls and roof are designed to guarantee possibly low heat loss, in order to keep the house warm and cozy against wind, rain or snow.

All the materials we use come from international certified producers. We only use natural high-quality timber.

5 REASONS TO CHOOSE A PREFABRICATED HOME:

- Prefabricated homes with timber structure offer high level of energy saving.
- Prefabricated homes are more earthquake resistant than traditional houses.
 - Considering value for money, prefabricated home is an economic solution.
 - Building period is significantly shorter.
 - Less waste and more cleanliness at the building site.



HOW DO WE BUILD?

All the elements which our houses consist of are made so that a team of builders with little experience can assemble them autonomously. We also offer mounting by our team, so that we leave the house externally ready, and you only deal with internal finishings.

The elements are loaded on 40t trucks inside our production facility, in order to protect them from bad weather.





Assembly of a wooden structure is performed with the help of a 30t crane on site.



A team of 4 men can mount such a house in 7 to 14 days.



The client receives a structure in seasoned timber, which can still be modified internally during the implementation phase.

FACTORY PACKAGE

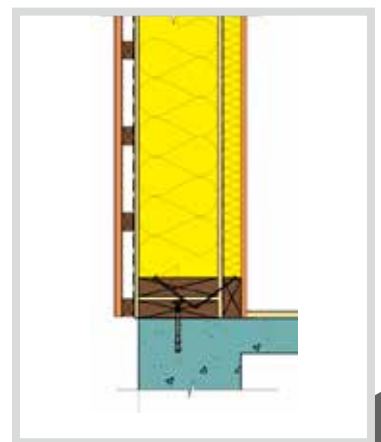


Insulated external walls: wall height 2500mm

- Wooden cladding 21 x 145 UYVk Spruce AB - horizontal
- Ventilation lath 30x45mm
- Facade membrane DELTA
- Timber construction C24 / 45x195mm
- 200mm thermal insulation (2 x 100mm mineral wool)
- Vapor barrier 0,2mm

Internal walls

- Timber frame – lose material / Wooden frame C24 / 45x95mm length 6000mm





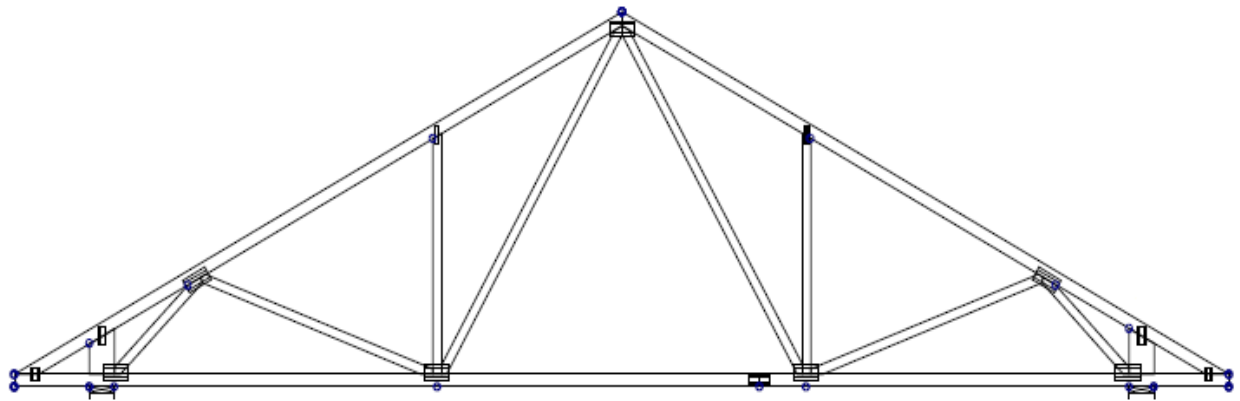
Plasterboard

- 12.5 mm plasterboard

Ceiling (for 2-floor houses only)

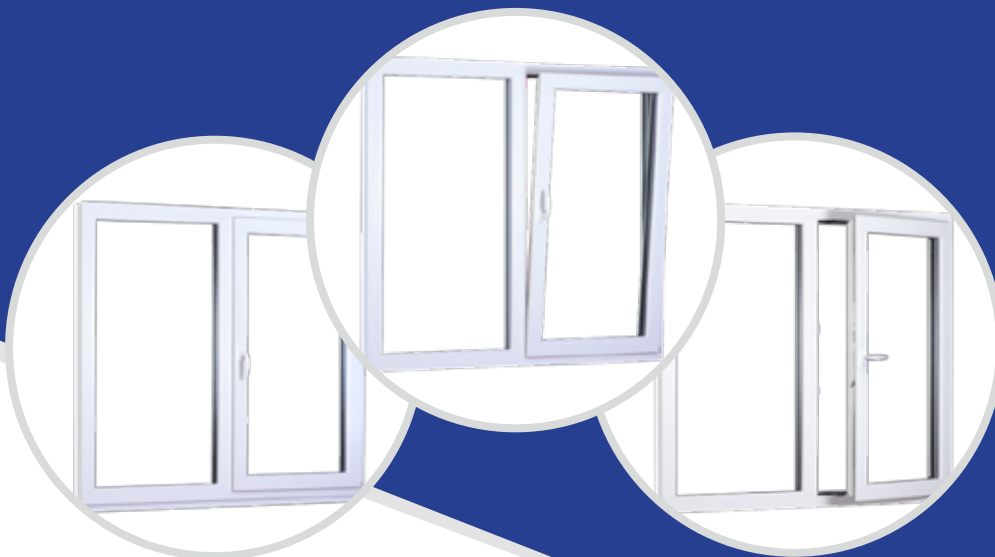
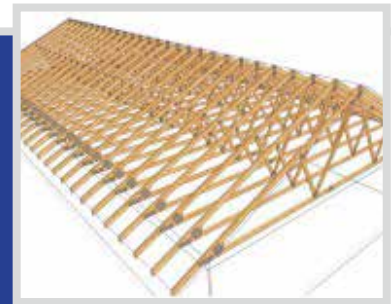
- OSB panel (technical wood), 18 mm thick
- Structural frame in wood, according to static calculations

WINDOWS AND DOORS



Roof structure:

- 30x50mm laths
- Vapor permeable roof underlayment membrane 0,38mm
- Roof trusses, according to static calculations



Windows and terrace doors

- White PVC windows, triple glazing, U- value 0,95 W/(m²K)



Trasport



Montage

Electric cable pipes are installed at the factory and are included in the price

The prices are calculated from the base plate, according to factory package description.

Not included in the factory package:

Foundation slab; Crane; Scaffolding and ladders, If needed.

Not included:

Sheets around the chimney and the roof;
Electrical system (cable pipes are included);
Hydraulic system; moldings.

Guarantee access to the building site for 2 – 3 trucks, depending on the size of the house, is required.

± 87m² 🛏 2 Bedrooms 🚿 2 Bathrooms

Prefabricated house 87





Prefabricated house 94

± 94m² 🛏 3 Bedrooms 💧 2 Bathrooms

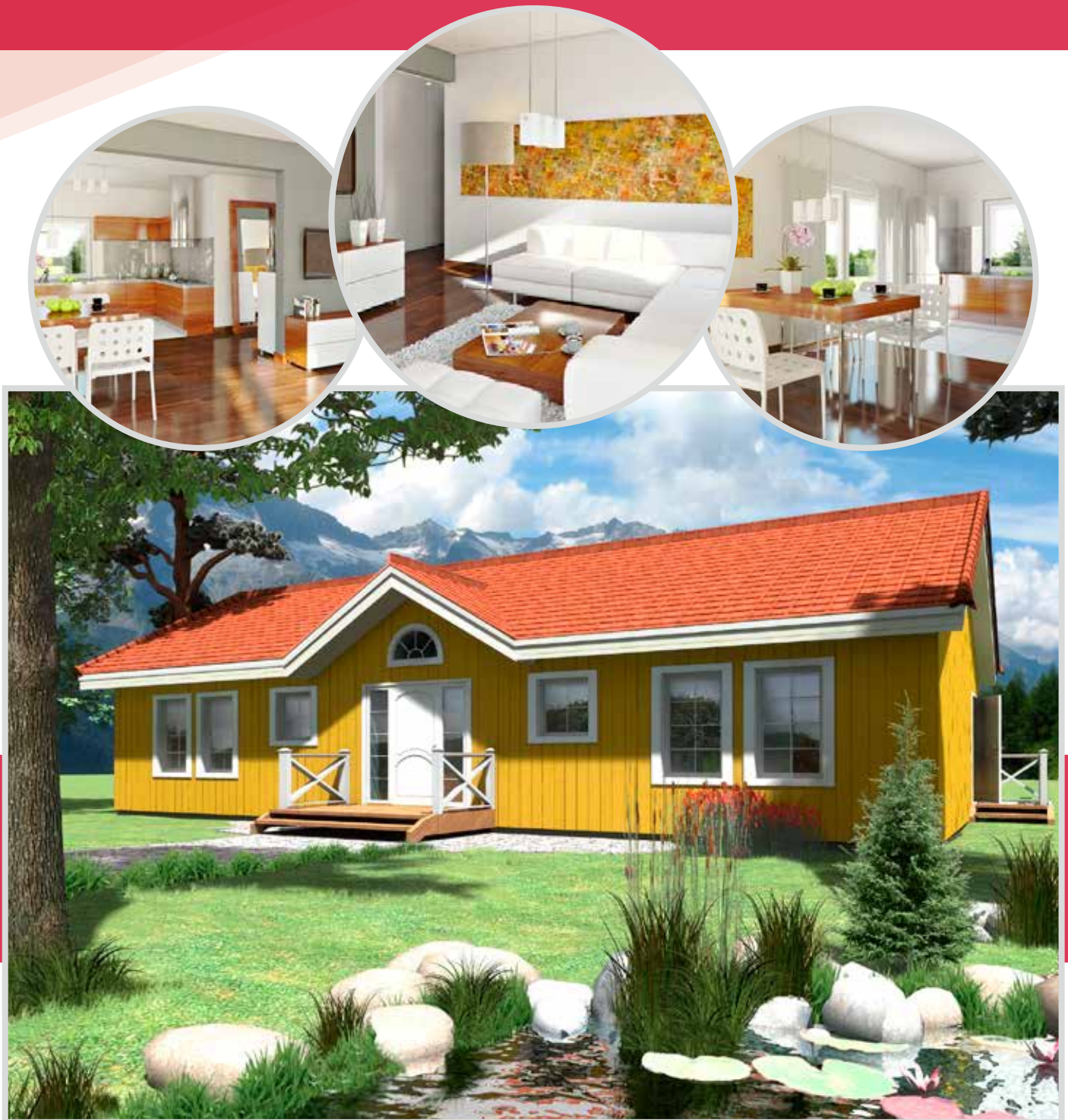


Prefabricated house 104

± 104m² 🛏 3 Bedrooms 💧 2 Bathrooms

± 106m² 🛏 3 Bedrooms 🚿 2 Bathrooms

Prefabricated house 106



± 107m² 🛏 3 Bedrooms 🚿 2 Bathrooms

Prefabricated house 107





Prefabricated house 108

± 108m² 🛏 3 Bedrooms 💧 2 Bathrooms



Prefabricated house 109

± 109m² 🛏 3 Bedrooms 💧 2 Bathrooms

± 110m² 🛏 2 Bedrooms 🚿 2 Bathrooms

Prefabricated house 110



± 111m² 🛏 3 Bedrooms 🚿 2 Bathrooms

Prefabricated house 111





Prefabricated house 115

✚ 115m² 🛏 2 Bedrooms 💧 2 Bathrooms



Prefabricated house 117

± 117m² 🛏 4 Bedrooms 💧 2 Bathrooms

± 137m² 🛏 3 Bedrooms 🚿 2 Bathrooms

Prefabricated house 136



± 137m² 🛏 3 Bedrooms 🚿 2 Bathrooms

Prefabricated house 137





Prefabricated house 141

± 141m² 🛏️ 4 Bedrooms 🚿 2 Bathrooms



Prefabricated house 145

± 145m² 🛏 3 Bedrooms 💧 2 Bathrooms

± 148m² 🛏 3 Bedrooms 🚿 2 Bathrooms

Prefabricated house 148



± 152m² 🛏 3 Bedrooms 🚿 2 Bathrooms

Prefabricated house 152





Prefabricated house 160

± 160m² 🛏️ 4 Bedrooms 💧 2 Bathrooms



Prefabricated house 175

✚ 175m² 🛏 4 Bedrooms 💧 2 Bathrooms 🚗 1 Garage

± 179m² 🛏 3 Bedrooms 🚿 2 Bathrooms

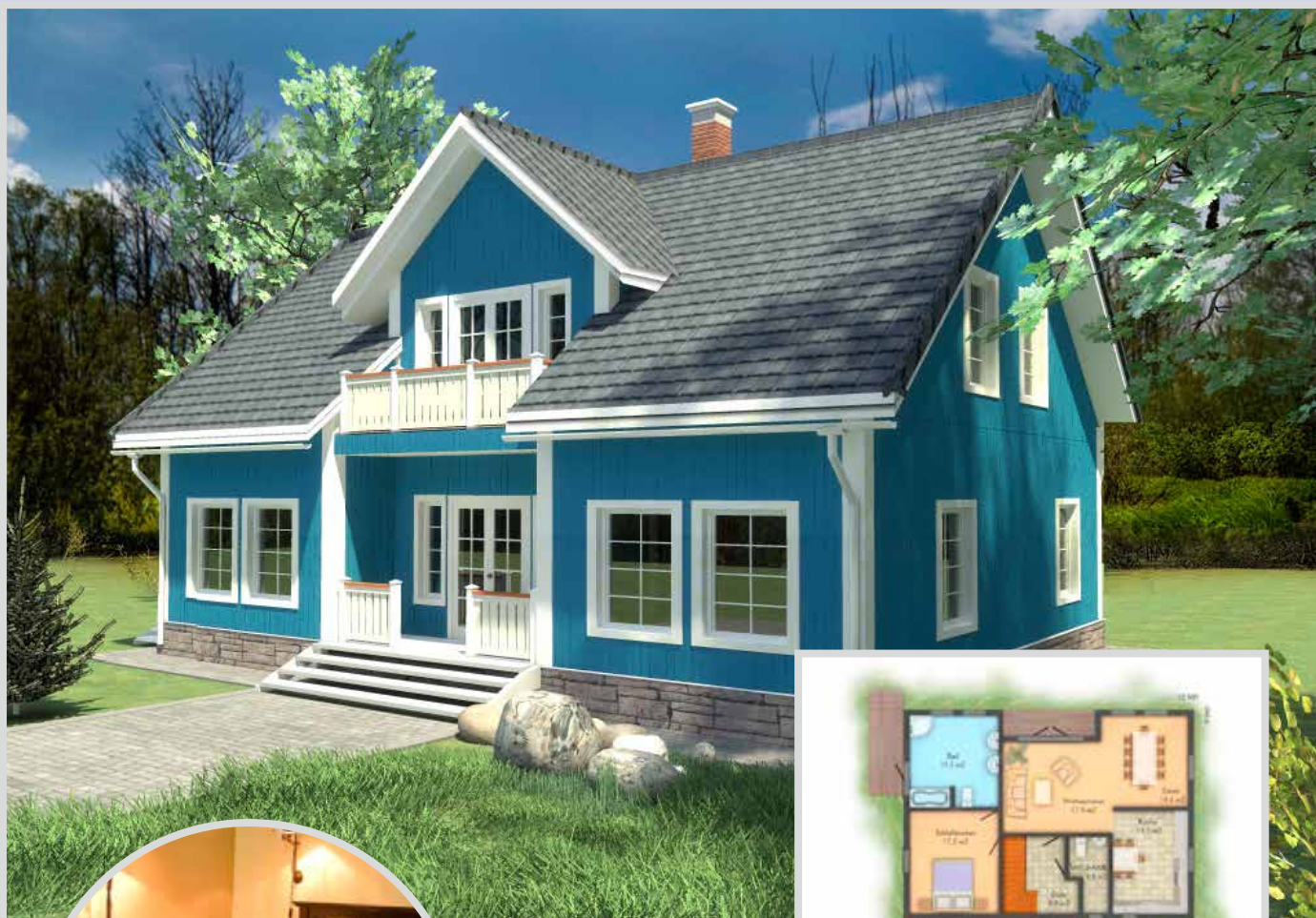
Prefabricated house 179



± 180m² 🛏 3 Bedrooms 🚿 2 Bathrooms

Prefabricated house 180





Prefabricated house 182

✚ 182m² 🛏 5 Bedrooms 💧 2 Bathrooms



Prefabricated house 199

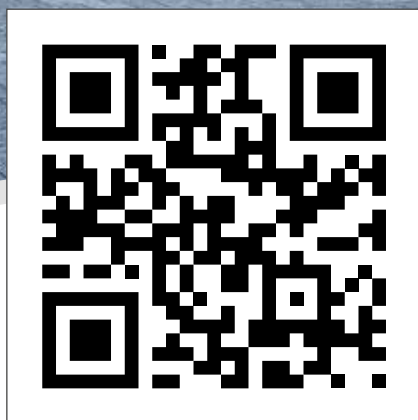
± 199m² 🛏 4 Bedrooms 🚿 3 Bathrooms

± 234m² 🛏 3 Bedrooms 🚿 3 Bathrooms 🚗 1 Garage

Prefabricated house 234



Norges Hus Tootmine OÜ
Lennu, Kalesi Village,
75201 Harjumaa, Estonia
+372 661 73 81
www.norgeshus.ee
info@norgeshus.ee



A healthy life
in a cozy house

www.norgeshus.ee